

Using the Priorclave Sterilizer

Updated June 29, 2022 by Jonathan Karty

Order of Operations the Autoclave

- Log your usage
- Open door (if door latched, see pages 9-11)
- Place load into autoclave
- Close autoclave door fully (see page 7)
- Select the cycle (1-5, see page 5)
- Press start
- When cycle finishes and temp < 80 °C, press “Door”
- Wait ~20 seconds and press “Door” again after 2nd beep
- Raise handle (see page 9)
- Remove items
- Push door mostly shut (leave a few centimeters gap)

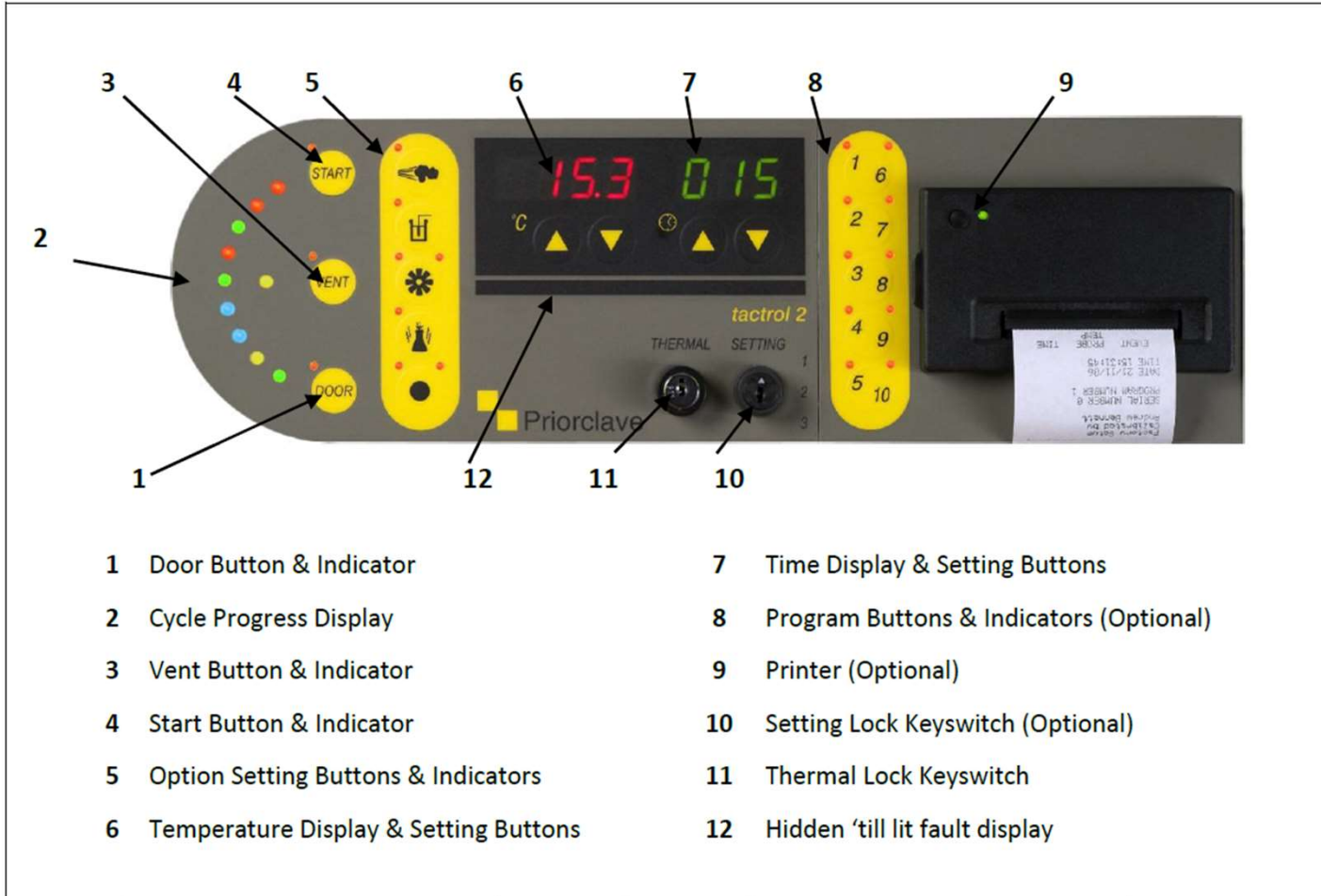


Loading Capacities

- **All loads should be placed in a watertight autoclave tray**
- Up to 21 1 L flasks
 - Vented stoppers or closures
- 2 large waste bags
 - Waste bags should have a fist sized hole to permit steam penetration and limit expansion during heating
- If flasks or waste bags are too tall, the interior gridded shelf can be pulled out
 - Please put shelf back in when finished



Control Panel Details



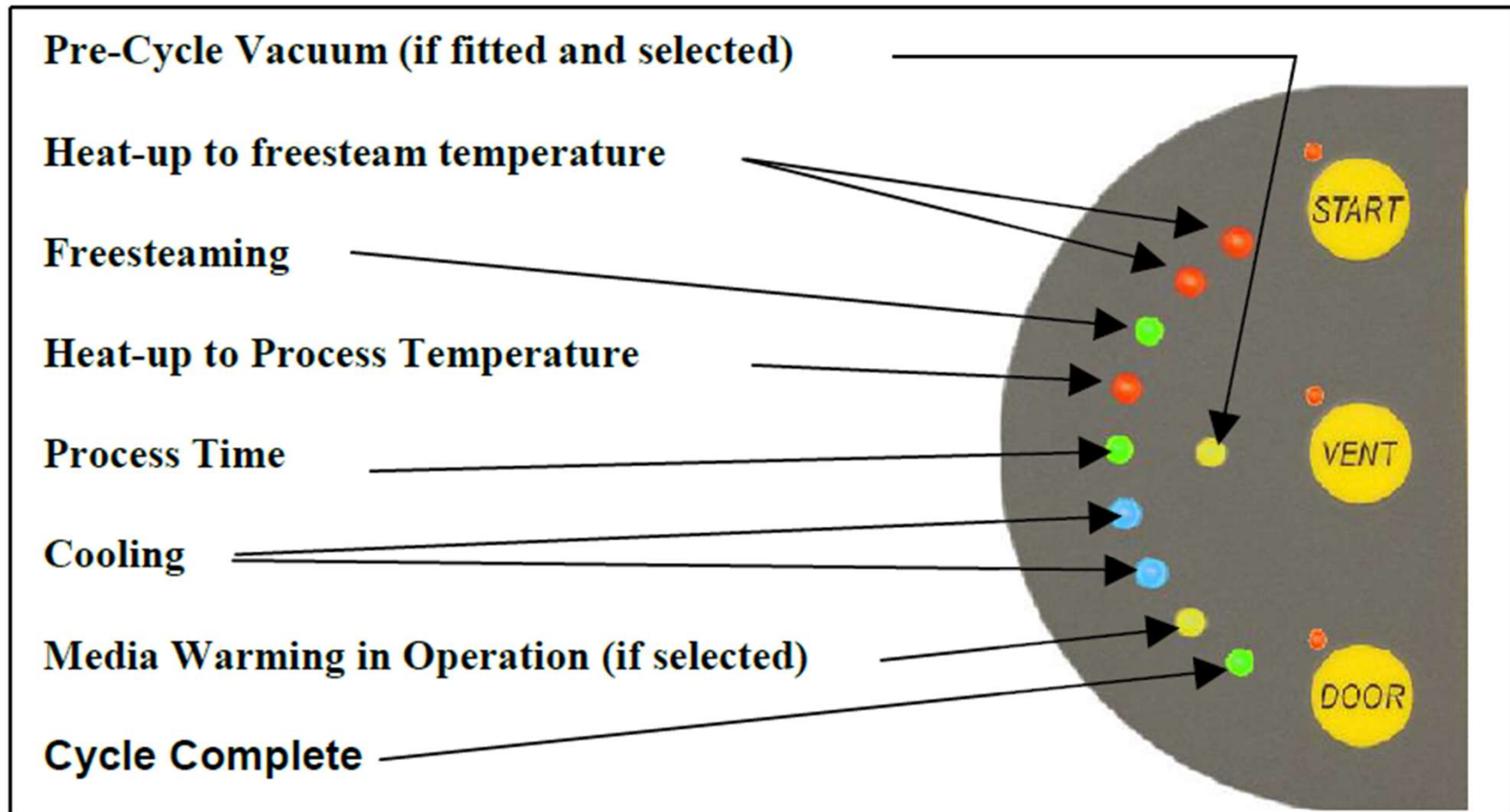
Full manual may be found on the A617 [website](#).

Autoclave Cycles

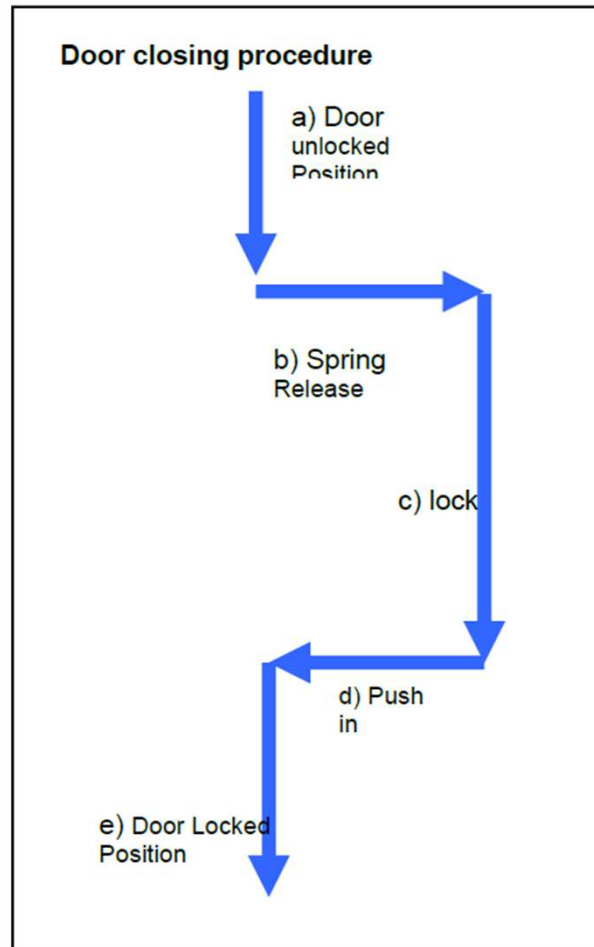
- 1. 30 minute liquid cycle (~2 hrs)
- 2. 30 min gravity with vacuum dry (glassware/tools, ~1.25 hrs)
- 3. 30 min gravity without vacuum dry (waste, ~1.25 hrs)
- 4. 45 minute liquid cycle (~2.5 hrs)
- 5. 60 min liquid cycle (~2.75 hrs)

**all sterilization is done @ 121.1 C and ~1 atm of steam pressure*

Cycle Indicator Lights



Closing the Door



- Remember to let the spring release (b) and pop out when closing
- Leave the door open a few cm when not in use
- Watch the [video](#) for detailed information



Handle pushed past safety lock ←

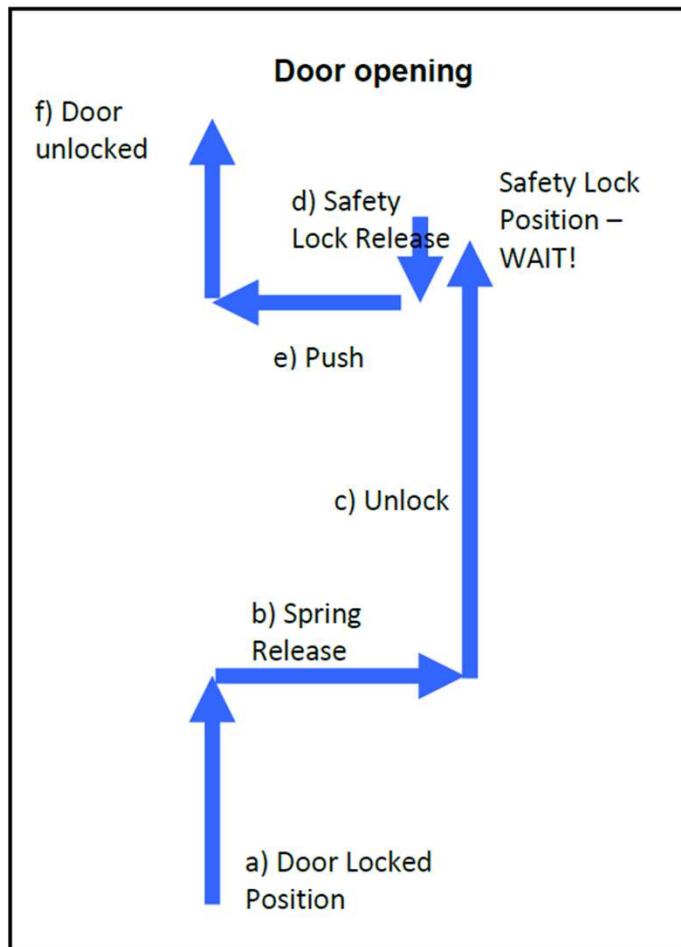
Door fully closed, ready for use →



To Run a Cycle

- Load material into autoclave
- Close the door and push the handle down to the safety lock position
- Pull the handle to the right and push down hard
 - This pulls the door tight and engages the safety mechanism
- Push the handle down to the fully closed position
- If you need to reopen the door before starting a cycle you must go through the full “Opening Door at the End of a Cycle” procedure
- Push the on the right side of the panel for the cycle you want
- Push “Start”
 - Note, autoclave will take ~15-30 minutes to reach operating temperature.

Opening the Door



- When not in use, leave the door in Safety Lock position, not fully locked position (d)
- Watch the video for opening procedures
- [Link to Video](https://indiana-my.sharepoint.com/:f/g/personal/jkarty_iu_edu/Ek4UYs2S4xpNhGeMU1nLo4oB580hKElw2HyvbXU5BcchiQ?e=v8U8Ty) or copy and paste text below

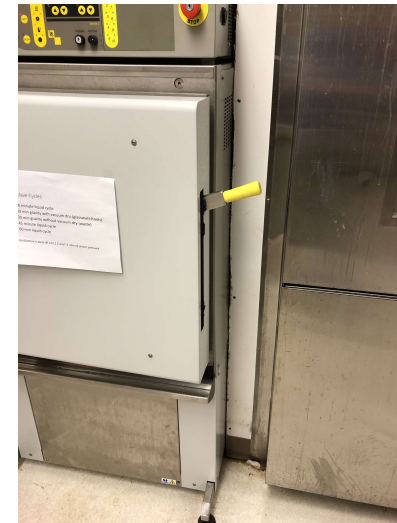
• https://indiana-my.sharepoint.com/:f/g/personal/jkarty_iu_edu/Ek4UYs2S4xpNhGeMU1nLo4oB580hKElw2HyvbXU5BcchiQ?e=v8U8Ty, watch autoclave_use_video.mp4.



Safety Lock Position



Fully Open



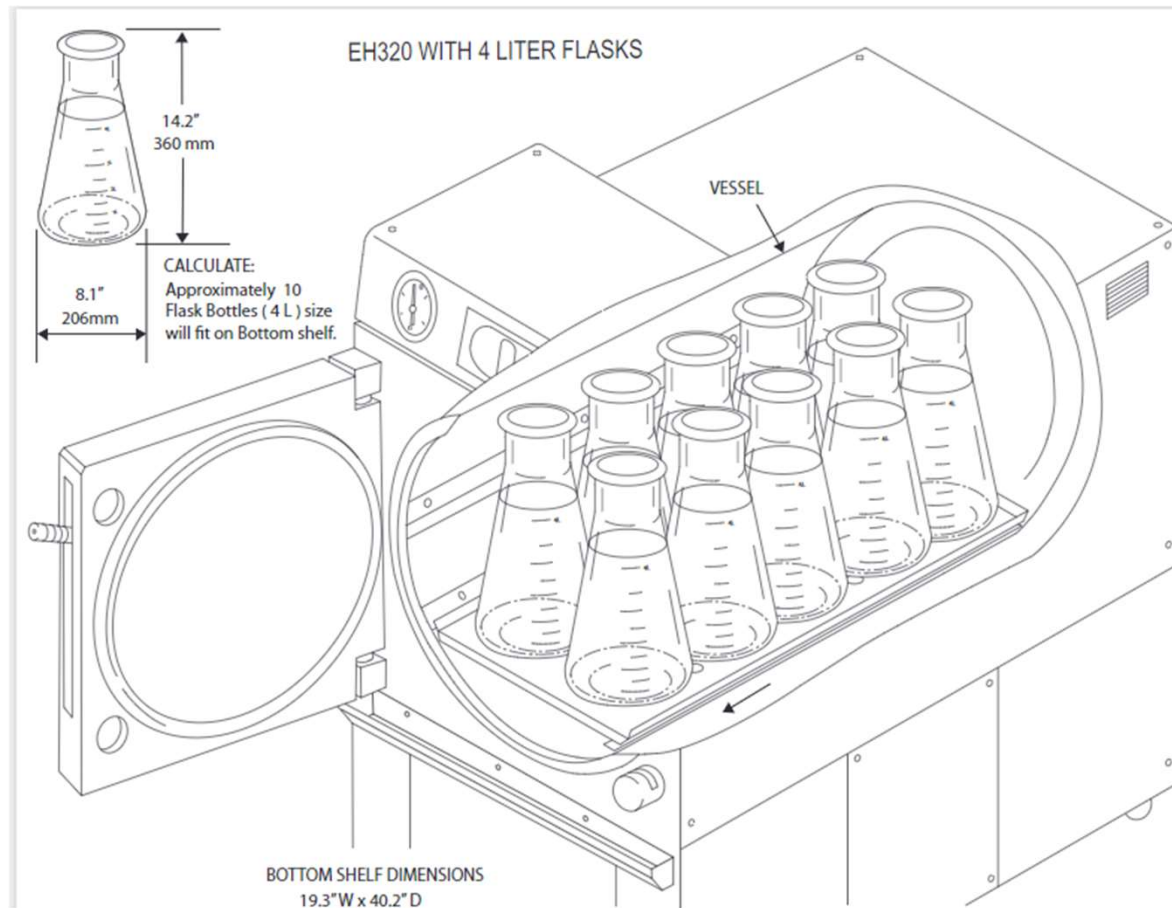
Opening Door at the End of a Cycle

- When cycle is complete, light on “Vent” button will come on
- Push “Door” button and wait 30 seconds for the loud beep
- Push “Door” button again and raise the door handle to the Safety Lock position
- Push handle in to get past the safety lock and raise handle all the way up to open the door
- Remove items
- Leave door open a few centimeters

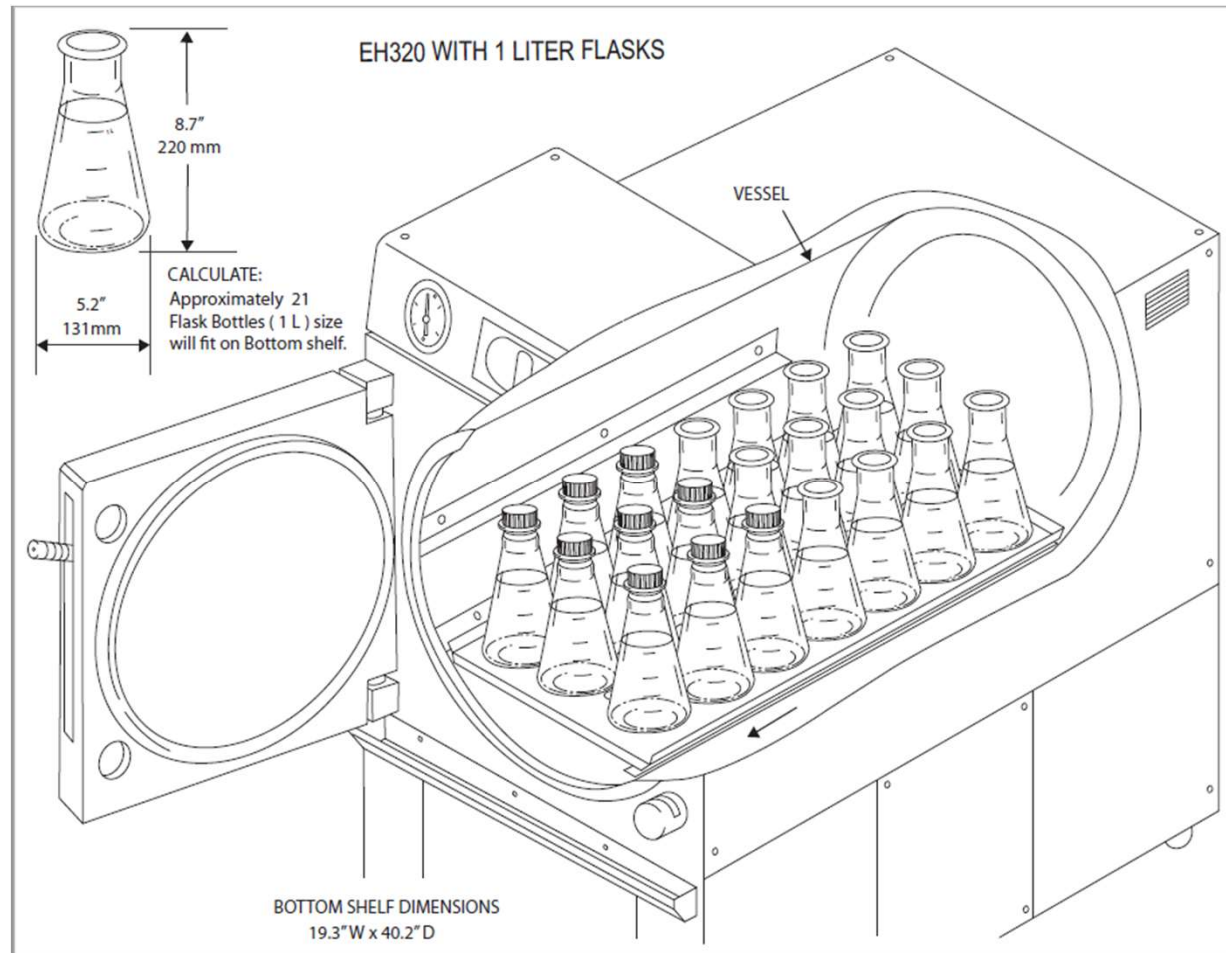
Opening the Door from Safety Lock Position

- The “Safety Lock” position is when the handle is about 2/3 of the way up
- Vent light must be lit to open door
 - If it is not lit, push “Door” button and wait for the loud beep
- Push the handle in and raise it the rest of the way to open the door
 - This may take a lot of force. Push hard.
- To leave autoclave ready for the next person, leave the door open a few centimeters.

4 L flask loading capacity illustration



1 L flask loading capacity illustration



Waste loading capacity illustration

